



EmpowerMed

Set of data collection  
tools and manuals in  
different formats

*Deliverable 4.2*



“



**Work package 4: Title**

**Work package leader: IREC**

**Responsible partner: UAB**

**Deliverable 4.2: Set of data collection tools and manuals in different formats**

**Authors:** Lluç Canals, Mariana Catalina Jiménez, Sergio Tirado Herrero, Lidija Živčič

**Version:** Version 1

**Date:** September 2020

**IMPORTANT NOTICE:** Reproduction of the content or part of the content is authorized upon approval from the authors and provided that the source is acknowledged.



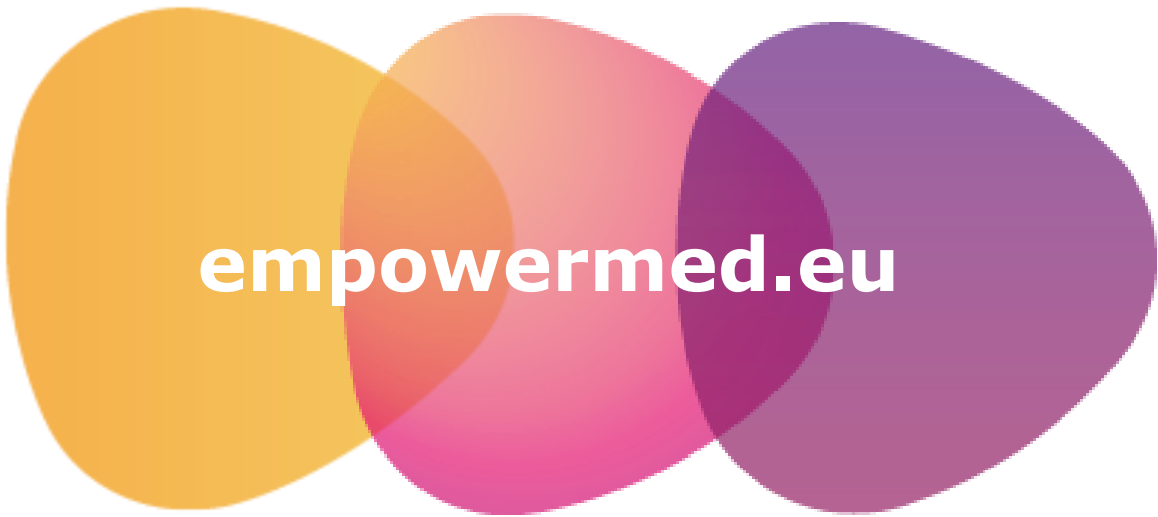
This project has received funding from the European Union's Horizon 2020 research and innovation program under grant agreement No 847052. The sole responsibility for the content of this document lies with the authors. It does not necessarily reflect the opinion of the European Union. Neither the EASME nor the European Commission are responsible for any use that may be made of the information contained therein.

## Overview of deliverable 4.2

This deliverable packs a set of tools for data collection during the implementation of the practical activities of EmpowerMed. With this brief overview all the elements of the set are presented to explain the purpose of each of the elements.

Practical approach to tackling energy poverty	Countries implementing the approach	Monitoring tools	Description
<b>Collective assemblies</b>	AL, CRO, FR, IT, SI, SP	<b>Data collection questionnaire – initial (word)</b>	Short set of questions for gathering information about participant households affected by energy poverty at a first stage.
		<b>Calculation tool (excel)</b>	Semi-automatized tool to collect and report data during collective assemblies, including gender indicators, participation level, follow-up data, investments performed, among others.
		<b>Data collection questionnaire – intermediary (google.form)</b>	Set of questions to gather more detailed information about participant households as a follow-up from the first set of questions.
<b>Household visits</b>	AL, CRO, FR, IT, SI	<b>Data collection questionnaire (excel)</b>	Questions to collect data from building's characteristics, socio-economic conditions, health and energy usage from participants during household visits.
		<b>Calculation tool (excel)</b>	Tool to perform a quick evaluation on potential energy, water, costs, and emissions savings driven by the implementation of energy efficient devices in participant households.
<b>DIY low-cost measures workshops</b>	AL, CRO, SI	<b>Data collection questionnaire (word)</b>	Questionnaire to collect data from participants on household situation, building situation, comfort and heating/cooling equipment, energy poverty, health, empowerment, attitudes towards energy efficiency measures and potential changes in their household.

<b>DIY smart metering</b>	FR, IT, SP	<b>DIY smart meter manual (word)</b>	Guidelines to access and analyze electricity consumption data from households' smart meters to provide personalized advice to save costs by selecting a different tariff or adjusting the contracted power.
<b>Support for financial schemes</b>	AL, CRO, FR, IT, SI, SP	<b>Data collection questionnaire (word)</b>	Questionnaire to collect data from participants on household situation, building situation, comfort and heating/cooling equipment, energy poverty, health and empowerment.
<b>Health workshops for people affected by energy poverty</b>	FR, IT, SP	<b>Data collection questionnaire (word)</b>	Questions to collect related to participant's health issues and perceptions.
		<b>Thermal and comfort monitoring guidelines (word)</b>	Guidelines for assessing thermal and comfort levels and their relationship with health in participant households using sensors on site.
<b>Health workshops for frontline staff (nurses, social workers)</b>	AL, CRO, SI	<b>Workshop evaluation questionnaire (word)</b>	No data collection or monitoring is planned as participants of these workshops are not people affected by energy poverty.



**empowermed.eu**